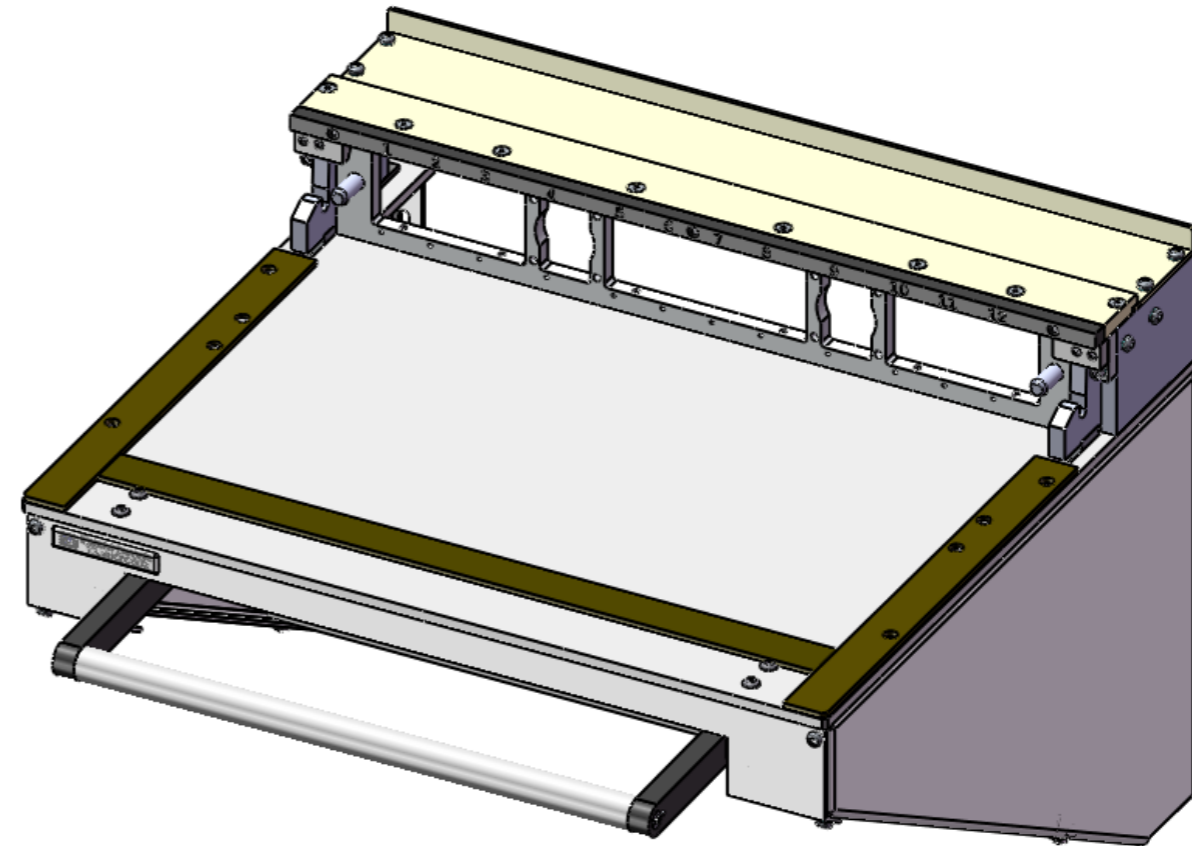


ITEM NO.	PART NUMBER	DESCRIPTION	QTY.
1	91772A829	Pan Head Phillips #10-32 x 0.5	2
2	91841A195	HEX NUT #10-32	2
3	92949A148	SCR, BUTTON, SKT, #6-32 X 0.500, SST	4
4	92949A194	SCR, BUTTON, SKT, #8-32 X 0.500, SST	8
5	700039	SCREW, SHCS #6-32 X 1/2	3
6	804987	LABEL ECT UROCAL	1
7	832318	PLATE SHIPPING 2270 RACK MTG RCVR	1
8	921098	SCREW, SHCS 1/4-20 X 5/8	2
9	A11733	GUIDE	2
10	A11734	STOP	2
11	A11812	PIN, SPRING (ROLL) #C3-11	1
12	A12699-1	SCREW, BHCS #4-40 X 1/4	2
13	A12702-1	SCREW, BHCS #10-32 X 1/2	4
14	A12703-6	SCREW, SHCS #4-40 X 1/2	4
15	A12705-1	SCREW, SHCS #8-32 X 3/8	4
16	A12705-8	SCREW, SHCS #8-32 X 5/8	4
17	A12706-2	SCR, CAP, SKT, #10-32 X 1 1/4	6
18	A12708-4	SCREW, FHCS #8-32 X 5/8	14
19	A12718-5	DOWEL PIN, Ø3/16 X 3/4 LONG	2
20	A12967-3	LOCK WASHER #8	12
21	A18583	BUSHING, SLIDE	2
22	A18584	BLOCK, PUSH	2
23	A19306-2	SCR, PAN, PHILIP, #8-32 X 0.375", SST	8
24	A19306-3	SCR, PAN, PHILIP, #8-32 X 0.625", SST	4
25	A35529	TAPE, DOUBLE SIDED, 3/4"W, (3M #9472LE)	2
26	A35778	PIN, VG RECEIVER ALIGNMENT	2
27	B11730	SUPPORT	1
28	B12150	BRACKET, PROBE BLOCK	2
29	B18568	COVER	1
30	B18571	CAM HOUSING	2
31	B18574	CROSS BRACE	1
32	B18575	PUSH BAR	2
33	B18576	HANDLE	1
34	B18577	STABILIZER VG RCVR	2
35	B18580	FRONT SLIDE	1
36	B18586	SLIDE	2
37	C11722	PLATE, SUPPORT	1
38	C18572	SIDE PLATE	2
39	C18578	SLIDE RCVR LEFT	1
40	C18579	SLIDE RCVR RIGHT	1
41	C18591	COVER, FRONT	1
42	D18567	PLATE, RECEIVER	1
43	D18569	SUPPORT, LEFT	1
44	D18570	SUPPORT, RIGHT	1
45	D18581	INTERFACE RECEIVER 10 BLOCK VG	1
46	Kit-141	SUBASSEMBLY, RIGHT HANDLE BRACKET FOR VGR12-RM1	1
47	Kit-142	SUBASSEMBLY, LEFT HANDLE BRACKET FOR VGR12-RM1	1

REV.	DESCRIPTION	DFT	DATE	ECR NO.
A	RELEASED PER EDR #622	RICHARDSON	-	-
B	REVISED PER ERN #754	-	10/00	-
C	ARTWORK REVISED, MIGRATED TO SW	YAN ZHANG	11/3/2014	5357
DA	UPDATE PARTS LIST AS PER ECO	YAN ZHANG	1/29/2016	-



**QTY: REFER TO BOM**

- PLEASE NOTE:**
1. DIMENSIONAL LIMITS APPLY AFTER TREATMENT.
  2. REMOVE ALL SHARP EDGES.
  3. -

THIS DOCUMENT IS THE PROPERTY OF, AND CONTAINS INFORMATION PROPRIETARY TO **EVERETT CHARLES TECHNOLOGIES**. IT IS TO BE RETURNED UPON REQUEST. REPRODUCTION BY ANY MEANS, DISCLOSURE OR USE OF ITS CONTENTS FOR WHICH IT IS LOANED, WITHOUT WRITTEN CONSENT OF EVERETT CHARLES TECHNOLOGIES IS STRICTLY PROHIBITED.

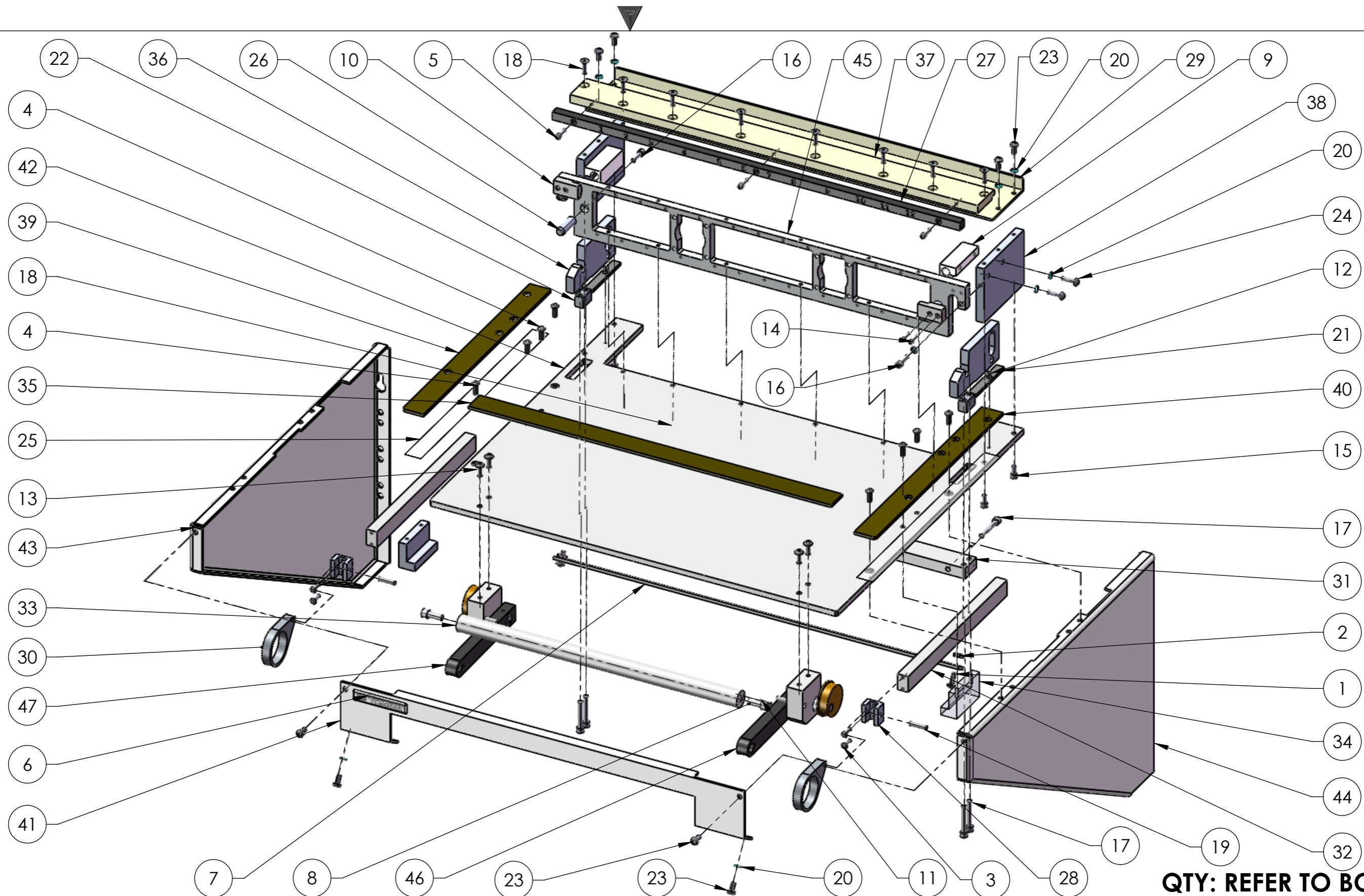
- UNLESS OTHERWISE SPECIFIED:
1. DIMENSIONS ARE IN INCHES
  2. DEBURR ALL SHARP EDGES: .01 x 45°
  3. DO NOT SCALE DRAWING
  4. TOLERANCES: .ANGLES ± 0.5°  
.XX ± 0.02  
.XXX ± 0.005  
.XXXX ± 0.0005
  5. MACHINING REQUIRED:

PROJECTION:	
DRAWN BY:	<b>YAN ZHANG</b>
ENGR APVD	
MATERIAL	
TREATMENT	



BLK161 KALLANG WAY #06-18/26  
SINGAPORE 349247  
TEL: (65) 62938966 FAX: (65) 62939866

TITLE				
<b>RECEIVER ASSEMBLY VGR12-RM1</b>				
SIZE	SCALE	DOCUMENT NUMBER	SHEET	REV
<b>A4</b>	<b>1:4</b>	<b>KIT-140</b>	<b>1 OF 2</b>	<b>DA</b>



**QTY: REFER TO BOM**

THIS DOCUMENT IS THE PROPERTY OF, AND CONTAINS INFORMATION PROPRIETARY TO **EVERETT CHARLES TECHNOLOGIES**. IT IS TO BE RETURNED UPON REQUEST. REPRODUCTION BY ANY MEANS, DISCLOSURE OR USE OF ITS CONTENTS FOR WHICH IT IS LOANED, WITHOUT WRITTEN CONSENT OF EVERETT CHARLES TECHNOLOGIES IS STRICTLY PROHIBITED.

UNLESS OTHERWISE SPECIFIED:  
 1. DIMENSIONS ARE IN INCHES  
 2. DEBURR ALL SHARP EDGES: .01 x 45°  
 3. DO NOT SCALE DRAWING  
 4. TOLERANCES: .ANGLES ± 0.5°  
                   .XX ± 0.02  
                   .XXX ± 0.005  
                   .XXXX ± 0.0005  
 5. MACHINING REQUIRED:

PROJECTION:	
DRAWN BY:	<b>YAN ZHANG</b>
ENGR APVD	
MATERIAL	
TREATMENT	



BLK161 KALLANG WAY #06-18/26  
 SINGAPORE 349247  
 TEL: (65) 62938966 FAX: (65) 62939866

TITLE				
<b>RECEIVER ASSEMBLY VGR12-RM1</b>				
SIZE	SCALE	DOCUMENT NUMBER	SHEET	REV
<b>A4</b>	<b>1:4</b>	<b>KIT-140</b>	<b>2 OF 2</b>	<b>DA</b>